

Montage —  
**Uf Select.**





744-33373 Alpaca



744-00513 White Marble



744-35723 Jojoba



744-35733 Alfalfa



744-52783 Silver Birch



744-56303 Silver Ash



744-53503 Ganache



744-53493 Ghost



744-50393 Horseradish



744-35583 Oakmoss



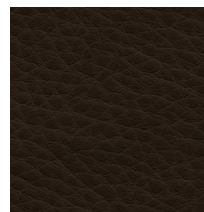
744-60883 Cast Iron



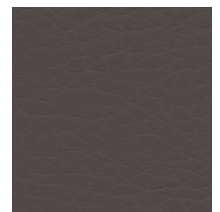
744-60873 Gris



744-53473 Smoke Gray



744-35573 Acacia



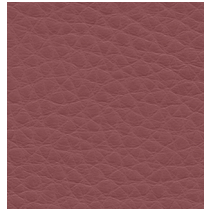
744-53483 Beechnut



744-35593 String



744-73323 Chimera



744-14403 Mimosa



744-53453 Gull



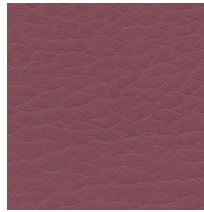
744-43493 Grasshopper



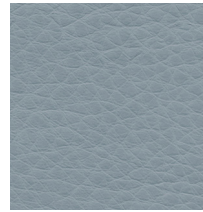
744-35563 Cord



744-35553 Old Penny



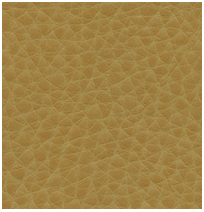
744-93053 Passion Fruit



744-25033 Copen Blue



744-43503 Jalapeno



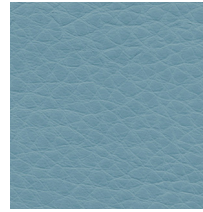
744-52173 Wax



744-82663 Chutney



744-93533 Mulled Wine



744-27873 Provence



744-43253 Sorrel



744-35673 Cinnamon Toast



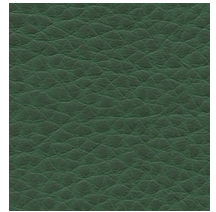
744-14393 Tobacco Brown



744-14233 Red Rock



744-27863 Blue Graphite



744-43243 Balsam



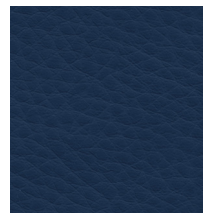
744-36473 Cardamom



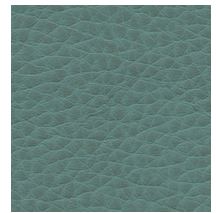
744-14223 Firebrick



744-14423 Poinsettia Red



744-26543 Bluestone



744-72353 Beryl



744-36513 Tarmac



744-82673 Orange Pepper



744-14453 Vivid Punch



744-25063 Indigo Batik



744-72313 Bluegrass

# Montage — Uf Select®

**Application** Interior Upholstery

---

## General Specifications

**Composition** Polycarbonate Blended Surface | 65% Polyester, 35% Cotton Backing

**Weight** Approx. 12.53 oz. Per Square Yard | Approx. 425 Grams Per Square Metre

**Thickness** Approx. 0.95 Millimetres

**Width** 54 Inches | 137 Centimetres

**Repeat** None

---

## Performance

**Abrasion** ASTM D4157 / 200,000 Double Rubs (Wyzenbeek)\* | BS EN ISO 12947-2 / 150,000 Rubs (Martindale)\*  
\*meets or exceeds

**Hydrolysis** 10 Weeks | ASTM D3690 Sect. 6.11 (Hydrolytic Stability) | ISO 1419 Method C (Accelerated Ageing)

**Adhesion of Coating** ASTM D751

**Tear Strength** ASTM D2261

**Breaking Strength** ASTM D751

**Seam Strength** ASTM D751 (Tack Tear)

**Tensile Strength** BS EN ISO 1421

---

## Colorfastness

**Light** AATCC 16.3, 200 Hours, Grade 4 | ISO 105 B02, Grade 6

**Crocking** AATCC 8, Grade 4-5 Wet & Dry

---

## Flammability Requirements

ASTM E84 (Adhered) - Class A | CA TB 117-2013 - Pass | FMVSS 302 - Pass | NFPA 260 - Class 1 | UFAC - Class 1 | AB 2998

These fabrics, when treated and/or used with other compatible furniture components, have been shown to perform under the fire test conditions of: BS 5852 Source 0, 1 & 5 (Cig, Match & Crib 5) | BS EN 1021 Part 1 & 2 (Cig & Match)

For more information on our fabrics, cleaning and care instructions, please visit our website.

[ultrafabricsinc.com](http://ultrafabricsinc.com)

Ultrafabrics® and logo, and Uf Select® are registered trademarks of Ultrafabrics Inc. Made in Mexico.

