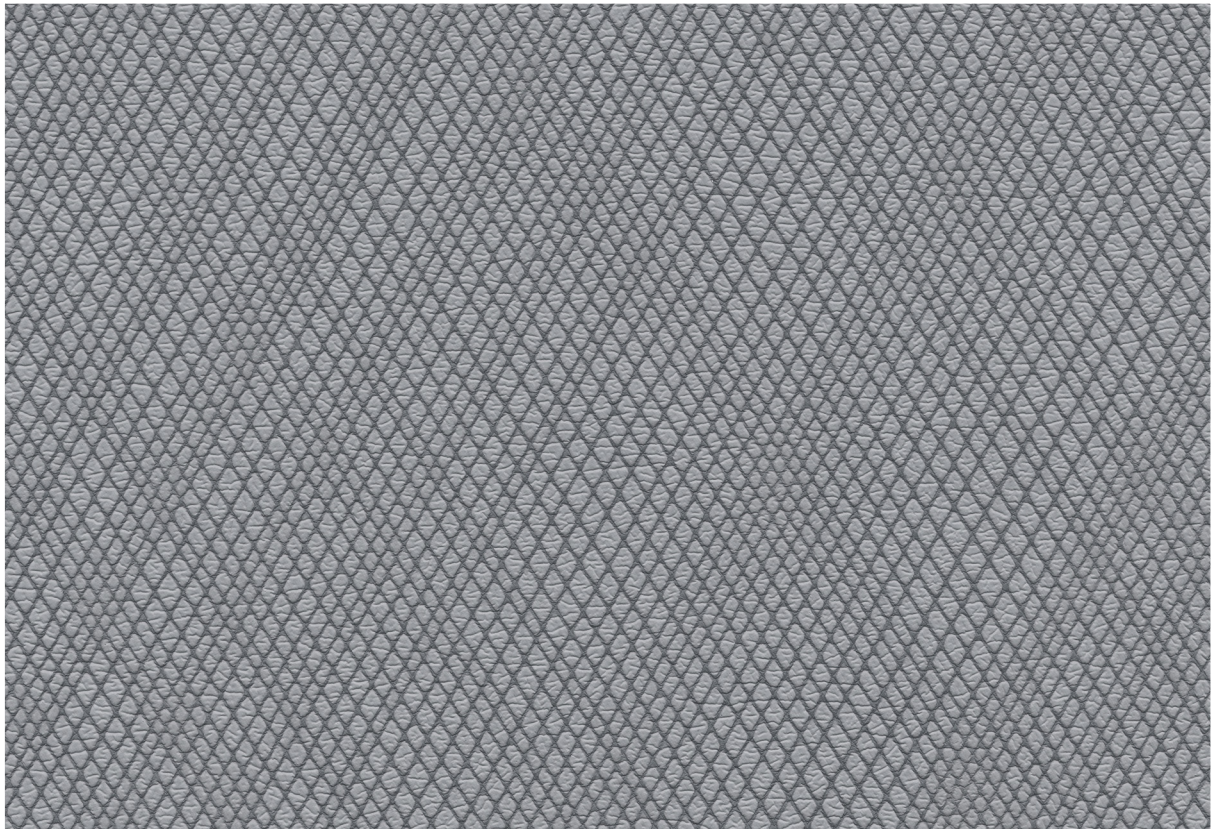
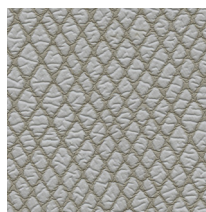


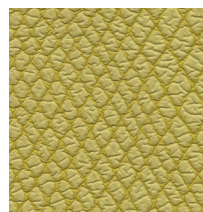
Wired — Ultrafabrics



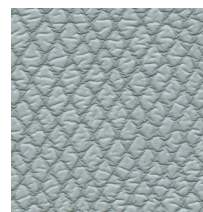
531-5309 Glisten Grey



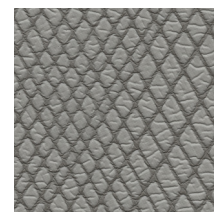
531-3283 Butter Cookie



531-5266 Lemon Drop



531-2591 Baby Blue



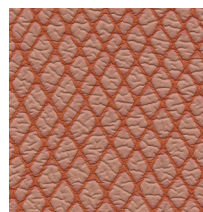
531-6568 Faded Stone



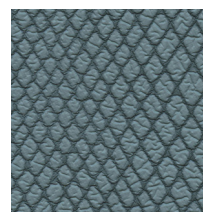
531-3282 Milkshake



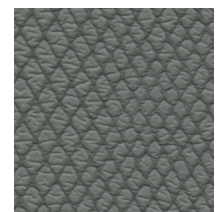
531-3284 Sugar Cone



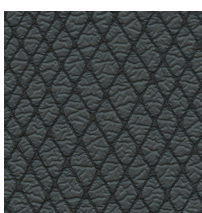
531-8236 Marmalade



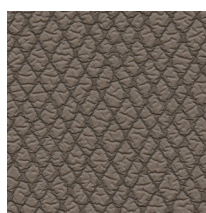
531-2592 Aquarius



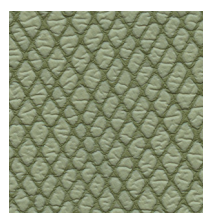
531-6563 Dust



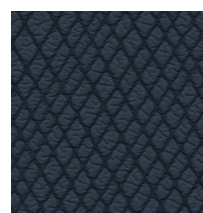
531-9421 Blackjack



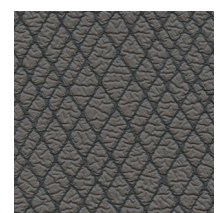
531-3285 Kahlua



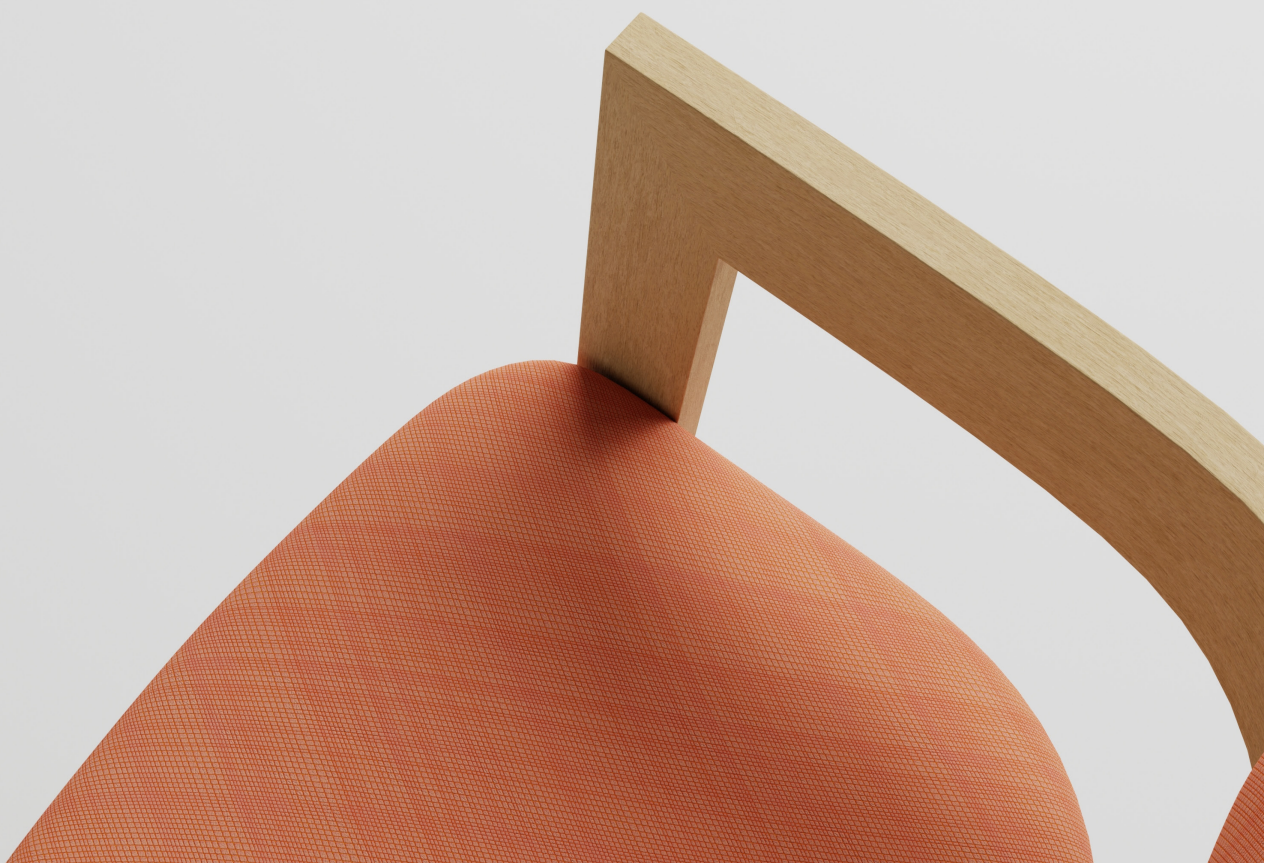
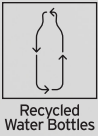
531-4306 Rio



531-2779 Hale Navy



531-9326 Acai



Applications

Interior Upholstery

General Specifications

Composition:

100% Polycarbonate Polyurethane Surface
65% Recycled Polyester, 35% Rayon Backing

Width:

54 Inches / 137 Centimetres

Repeat:

27.55"V x 16.61"H / 700mm V x 422mm H

Performance

Abrasion:

ASTM D4157 / 400,000 Double Rubs (Wyzenbeek)*

BS EN ISO 12947-2 / 200,000 Rubs (Martindale)*

*meets or exceeds

Hydrolysis:

16 Weeks

ASTM D3690 Sect. 6.11 (Hydrolytic Stability)

ISO 1419 Method C (Accelerated Ageing)

Colorfastness

Light: AATCC 16.3, 200 Hours, Grade 4
ISO 105 B02, Grade 6

Crocking: AATCC 8, Grade 4-5 Wet & Dry

Environmental

No intentionally added PFAS

SCS Indoor Advantage Gold certified

Health Care Without Harms V2 Compliant

REACH compliant

Does not contain Red List chemicals



Scan QR code for a full list of specifications.

For more information on certifications and standards, sustainability, as well as cleaning and care instructions, please visit our website.



ultrafabricsinc.com

Ultrafabrics® and logo, are registered trademarks of Ultrafabrics Inc. Made in Japan.

