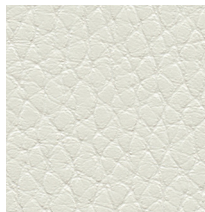


# Tottori — Ultrafabrics



601-5998 Rice Paper



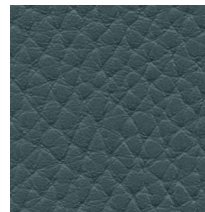
601-3418 Origami White



601-3120 Udon



601-3348 Ginseng



601-2622 Blue Mirage



601-5037 Classic Grey



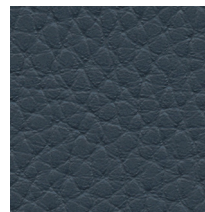
601-5998 Rice Paper



601-3280 Tatami Mat



601-3300 Terrain



601-2595 Hot Spring



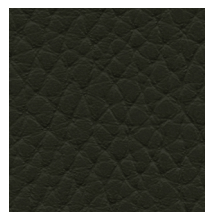
601-9362 Orchid



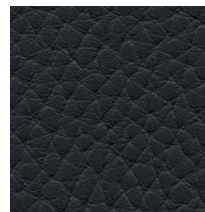
601-5033 Sand Castle



601-3386 Desert Dune



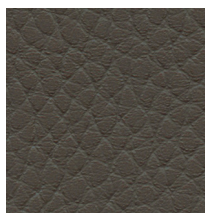
601-4312 Lichen



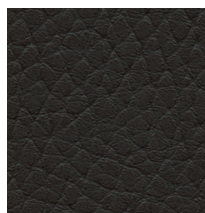
601-2515 Shibori Blue



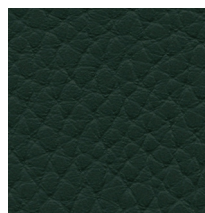
601-1404 Rouge



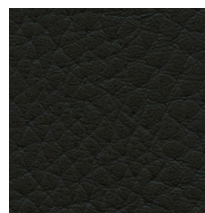
601-3400 Soba



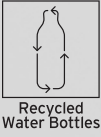
601-3297 Soy Sauce



601-4346 Dark Spruce



601-5020 Black Sesame



## Application

Interior Upholstery

## General Specifications

### Composition:

100% Polycarbonate Polyurethane Surface  
65% Recycled Polyester, 35% Rayon Backing

### Width:

54 Inches / 137 Centimetres

### Repeat:

None

## Performance

### Abrasion:

ASTM D4157 / 400,000 Double Rubs (Wyzenbeek)\*  
BS EN ISO 12947-2 / 200,000 Rubs (Martindale)\*

\*meets or exceeds

### Hydrolysis:

16 Weeks

ASTM D3690 Sect. 6.11 (Hydrolytic Stability)  
ISO 1419 Method C (Accelerated Ageing)

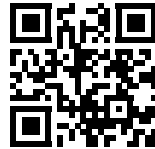
## Colorfastness

Light: AATCC 16.3, 200 Hours, Grade 4  
ISO 105 B02, Grade 6

Crocking: AATCC 8, Grade 4-5 Wet & Dry

## Environmental

No intentionally added PFAS  
SCS Indoor Advantage certified  
REACH compliant  
Does not contain any Red List chemicals



Scan QR code for a full list of specifications.

For more information on certifications and standards, sustainability, as well as cleaning and care instructions, please visit our website.



[ultrafabricsinc.com](https://www.ultrafabricsinc.com)

Ultrafabrics® and logo are registered trademarks of Ultrafabrics Inc. Made in Japan.

