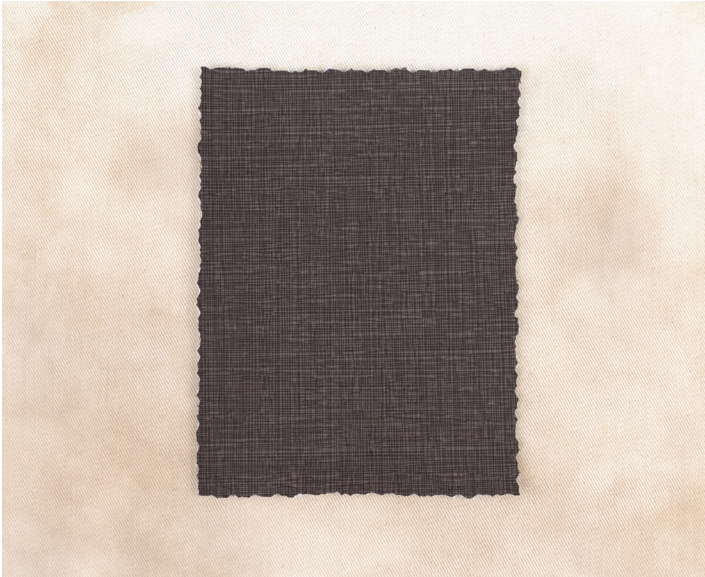


Lino — Uf Select®



Artist-inspired tones and textures. An array of timeless and on-trend hues. Quality and comfort endorsed by Ultrafabrics. Uf Select brings it all together — with faster delivery and competitive pricing.

Inspired by finely-cut linoleum printing, **Lino** emulates a textile weave with its refined crosshatch design. Its textural aesthetic is brought to life through an assortment of foundational neutrals and on-trend colors ranging from classic blues to fresh greens that pop.

- 01** Artisanal quality that honors handicraft techniques
- 02** Crafted in North America
- 03** Balances comfort, durability, and price
- 04** Polycarbonate blend provides excellent durability
- 05** Easy cleaning and care
- 06** PFAS free
- 07** No FR additives
- 08** REACH compliant
- 09** 10 weeks hydrolysis resistance
- 10** 200,000 double rubs (Wyzenbeek), 150,000 rubs (Martindale)
- 11** Bleach cleanable (1:5 bleach/water solution)
- 12** Does not contain any Red List chemicals

Lino — Uf Select®

Application Interior Upholstery

General Specifications

Composition Polycarbonate Blended Surface | 65% Polyester, 35% Cotton Backing

Weight Approx. 13.1 oz. Per Square Yard | Approx. 445 Grams Per Square Metre

Thickness Approx. 0.95 Millimetres

Width 54 Inches | 137 Centimetres

Repeat None

Performance

Abrasion ASTM D4157 / 200,000 Double Rubs (Wyzenbeek)* | BS EN ISO 12947-2 / 150,000 Rubs (Martindale)*
*meets or exceeds

Hydrolysis 10 Weeks | ASTM D3690 Sect. 6.11 (Hydrolytic Stability) | ISO 1419 Method C (Accelerated Ageing)

Adhesion of Coating ASTM D751

Tear Strength ASTM D2261

Breaking Strength ASTM D751

Seam Strength ASTM D751 (Tack Tear)

Tensile Strength BS EN ISO 1421

Colorfastness

Light AATCC 16.3, 200 Hours, Grade 4 | ISO 105 Bo2, Grade 6

Crocking AATCC 8, Grade 4-5 Wet & Dry

Flammability Requirements

ASTM E84 (Adhered) - Class A | CA TB 117-2013 - Pass | FMVSS 302 - Pass | NFPA 260 - Class 1 | UFAC - Class 1 | AB 2998

These fabrics, when treated and/or used with other compatible furniture components, have been shown to perform under the fire test conditions of:
BS 5852 Source 0, 1 & 5 (Cig, Match & Crib 5) | BS EN 1021 Part 1 & 2 (Cig & Match)

For more information on our fabrics, cleaning and care instructions, please visit our website.