

Ellora — Ultrafabrics



604-4023 Granola



604-3563 Dawn Mist



604-3562 Soft Almond



604-4370 Icy Pear



604-4024 Whale Bone



604-4025 Coffee Cream



604-4371 Olive Drab



604-8276 Sunset Gold



604-5388 Stone Gray



604-7247 Cloud Green



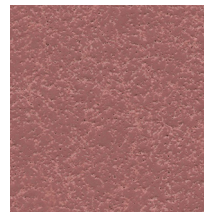
604-0024 Antique Lace



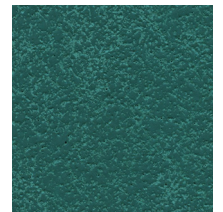
604-5385 Mourning Dove



604-3564 Roast Chestnut



604-6599 Rose Water



604-7248 Ocean Teal



604-5387 Silver Charm



604-5390 Tungsten



604-8277 Auburn



604-9438 English Violet



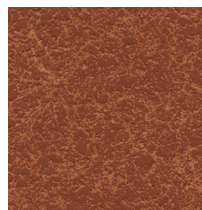
604-2815 Faded Denim



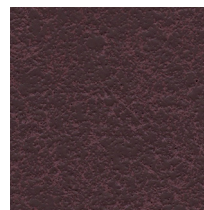
604-5389 Outer Space



604-5386 Black Crow



604-8278 Clay Pot



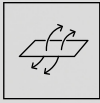
604-9437 Fine Wine



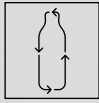
604-2814 Navy Blazer



Acoustics*



Breathable
Comfort



Recycled
Water Bottles

Applications

Interior Upholstery

General Specifications

Composition:

100% Polycarbonate Polyurethane Surface
65% Recycled Polyester, 35% Rayon Backing

Width:

54 Inches / 137 Centimetres

Repeat:

None

Performance

Abrasion:

ASTM D4157 / 300,000 Double Rubs (Wyzenbeek)*

BS EN ISO 12947-2 / 160,000 Rubs (Martindale)*

*meets or exceeds

Hydrolysis:

16 Weeks

ASTM D3690 Sect. 6.11 (Hydrolytic Stability)

ISO 1419 Method C (Accelerated Ageing)

Air Permeability:

ASTM D737

Sound Absorption:

ASTM C423

Colorfastness

Light:

AATCC 16.3, 200 Hours, Grade 4

ISO 105 B02, Grade 6

Crocking:

AATCC 8, Grade 4-5 Wet & Dry

Environmental

No intentionally added PFAS

SCS Indoor Advantage certified

REACH compliant

Does not contain any Red List chemicals



Scan QR code for a full list of specifications.

For more information on certifications and standards, sustainability, as well as cleaning and care instructions, please visit our website.

* Acoustic applications only available in North America



ultrafabricsinc.com

Ultrafabrics® and logo are registered trademarks of
Ultrafabrics Inc. Made in Japan.

